

Study They would never do it to you 2020

Dogs and cats abandoned, adopted and lost in Spain during 2019



During 2019, were taken in by the animal welfare centres

306,000

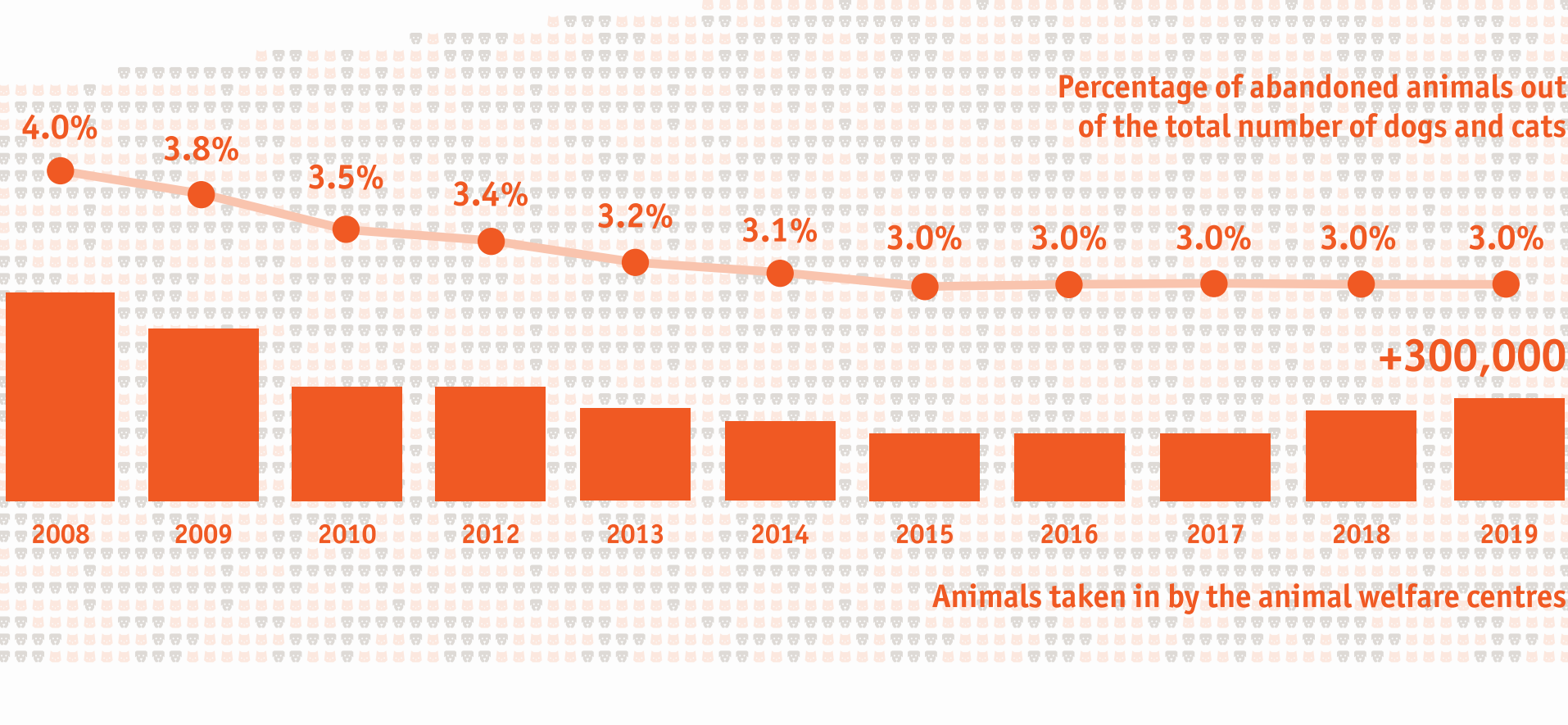
dogs and cats

183.103

123.403

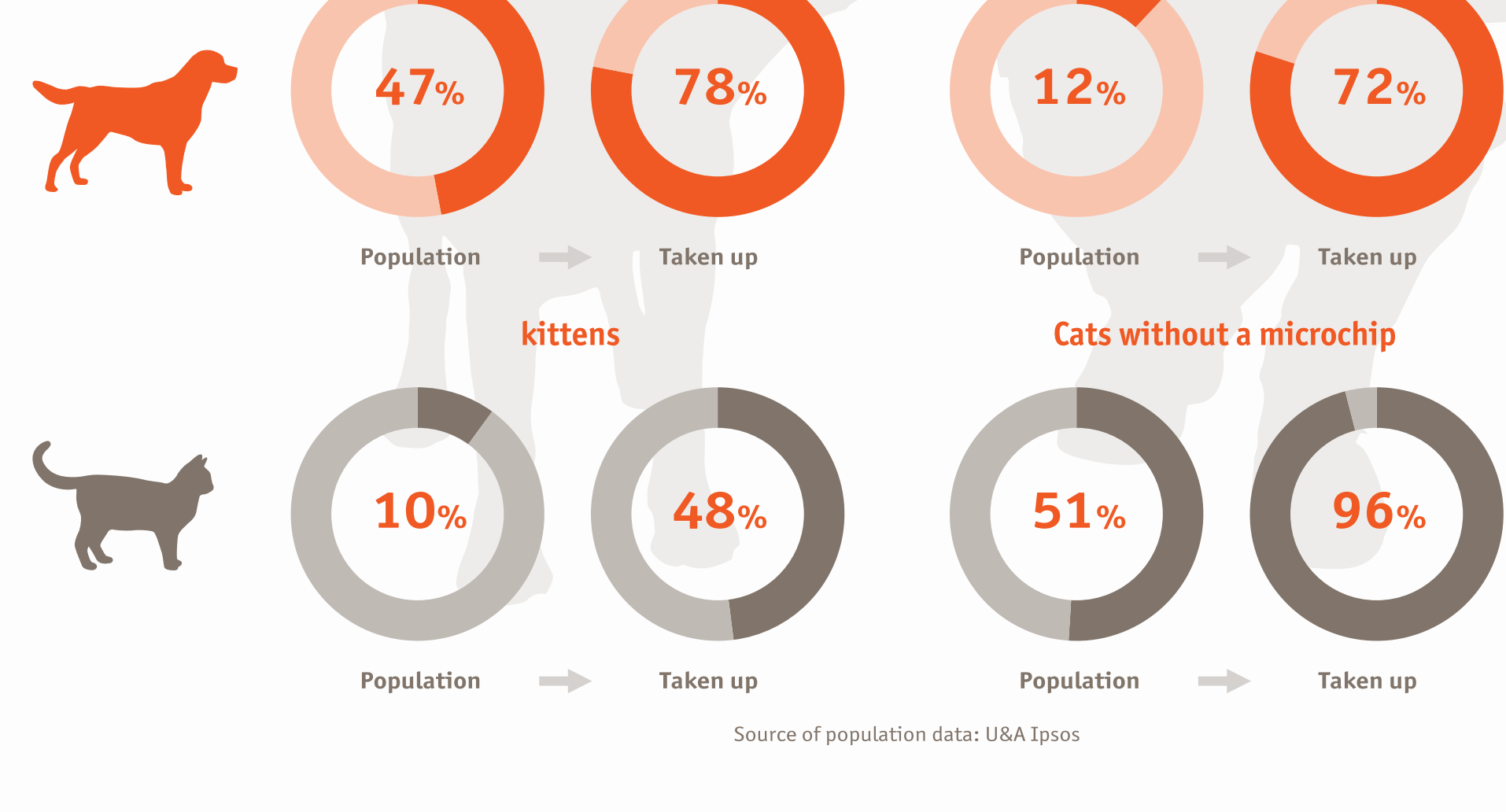
Percentage of abandoned animals

POPULATION OF DOGS AND CATS IN 2019: 10,330,000



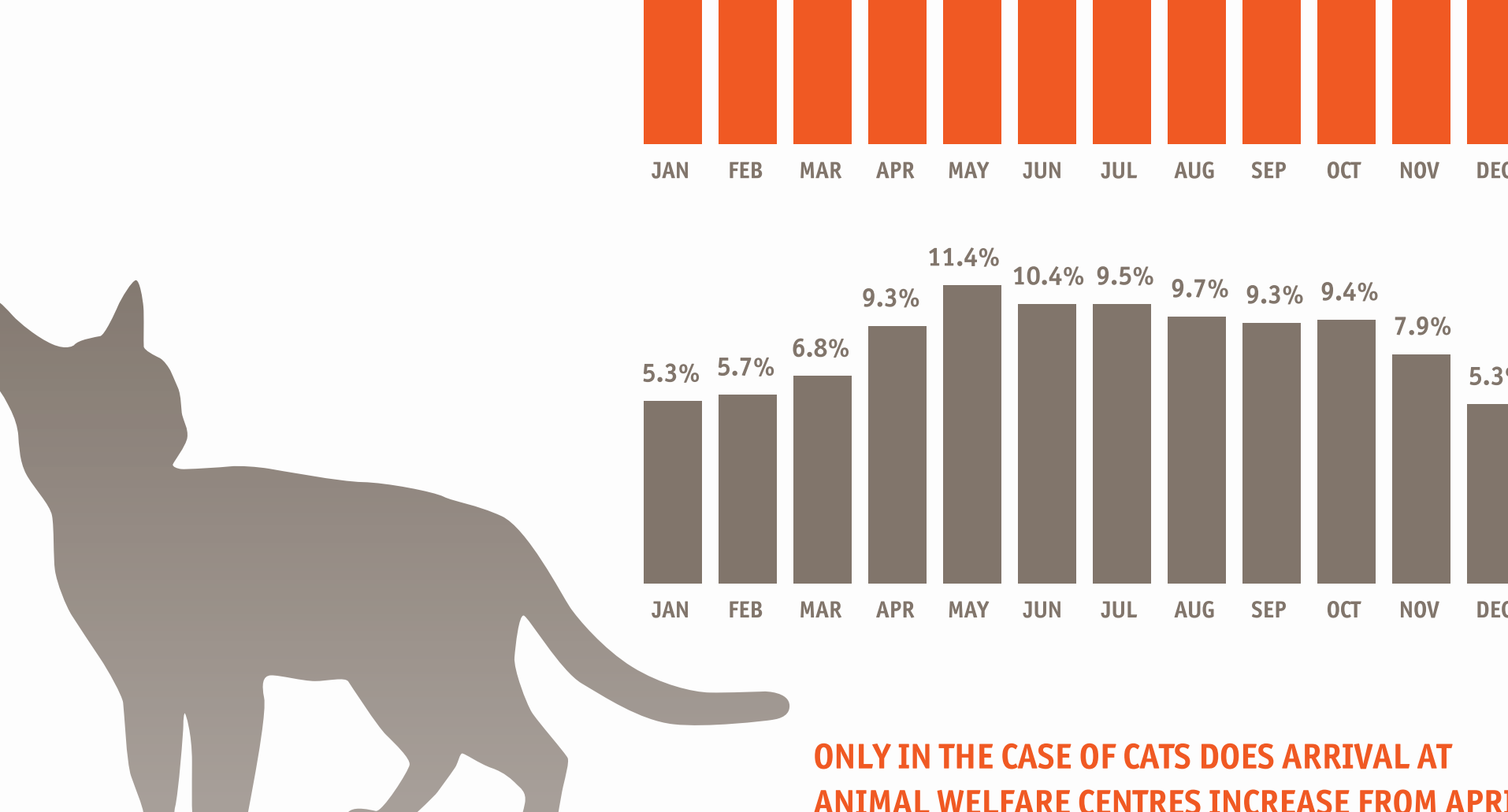
THE POPULATION OF DOGS AND CATS HAS INCREASED AND THE NUMBER OF ANIMALS THAT REACH ANIMAL WELFARE CENTRES HAS DECREASED SLIGHTLY SINCE 2008, WHICH EXPLAINS A CERTAIN STABILITY IN THE PERCENTAGE OF ANIMALS ABANDONED, AROUND 3%

Profile of the animal in animal welfare centres



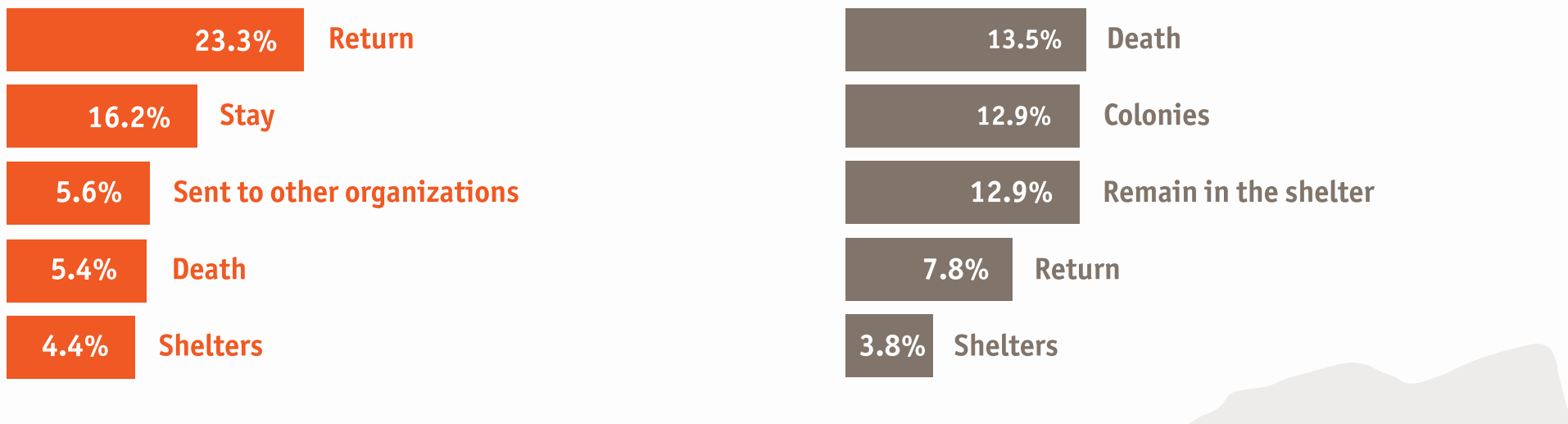
THE ANIMALS WITH THE GREATEST LIKELIHOOD OF REACHING ANIMAL WELFARE CENTRES ARE: DOGS AND CATS THAT ARE NOT SPAYED OR NEUTERED OR IDENTIFIED, BIG DOGS, AND KITTENS

Seasonal nature



ONLY IN THE CASE OF CATS DOES ARRIVAL AT ANIMAL WELFARE CENTRES INCREASE FROM APRIL TO OCTOBER, AS THESE ARE THE MONTHS WHEN LITTERS ARE BORN

Main fates of animals

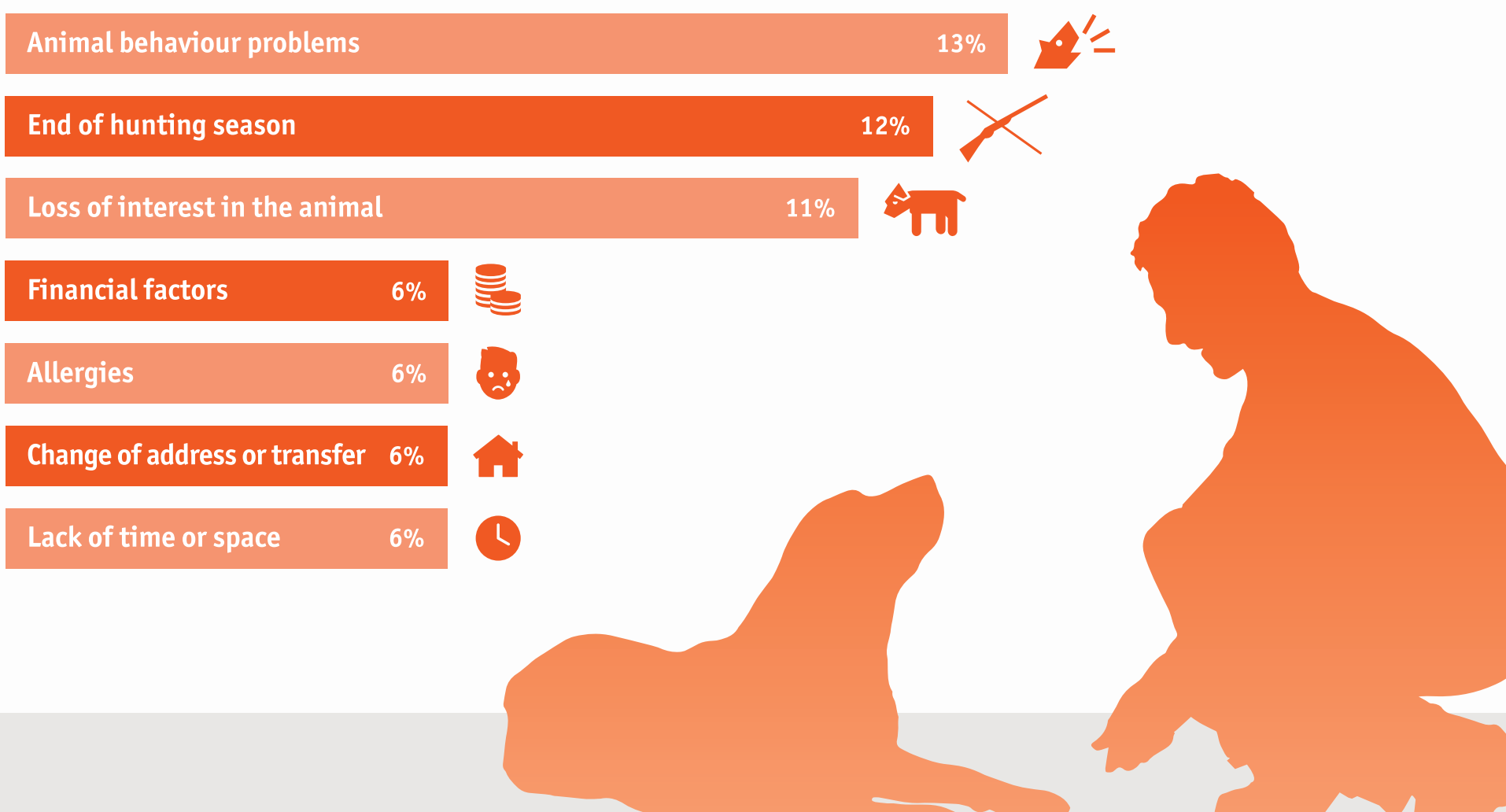


Time spent in animal welfare centres



THE AVERAGE TIME SPENT BY DOGS AND CATS IN ANIMAL WELFARE CENTRES VARIES CONSIDERABLY IN FUNCTION OF WHETHER THEY ARE PUPPIES OR KITTENS OR ADULTS

Main reasons for abandonment



Measures against abandonment

- Awareness**
Raising people's awareness about our responsibilities towards our animals.
- Identification**
Identifying them correctly through a microchip would increase the recovery of lost animals.
- Spaying**
Spaying or neutering to avoid unwanted litters.
- Education**
Raising them to know them better and to improve the bond and the quality of life together.
- Adoption**
Promoting adoption to give them a home.
- Commitment**
Reinforcing laws and education to achieve greater commitment and compliance with regulations.
- Cohabitation**
Providing tools for families to face situations when living together becomes complicated.